



LAKES DISTRICT HEALTH BOARD

# Rotorua Emergency Multi Agency EMERGO Exercise



**National Fire Training Centre**  
**29 September 2010**

————— *Healthy Communities – Mauriora!* —————

# ATR 72 approaches Rotorua International Airport



# Details

- At 0850 hours today the 29th September an ATR 72 aircraft from Christchurch was scheduled to land at Rotorua Airport.
- This was a full flight, carrying 68 passengers plus crew of two pilots and one hostess.
- On approach from the south, the captain reported problems with one engine. The aircraft crashed immediately afterwards onto the sports field Puketawhero Park, which runs alongside Te Ngae Road.





Image Bay of Plenty TA's  
© 2010 MapData Sciences Pty Ltd, PSMA

Google



# Crash site

- The aircraft fuselage broke up on impact. Some passengers/crew are trapped and others have been thrown out in the vicinity of the site. The site of the incident is restricted to the Puketawhero Park area.



# Emergency Services Response

- Police, Fire, Ambulance, Civil Defence response Teams and Airport authorities were called to the EOC.



# Exercise brief

---

- The aim of the exercise was to test the response of Fire, Police Ambulance and Health to a major trauma incident in Rotorua.
- The scenario was also aimed to help determine the most appropriate location for an EOC, should a plane crash occur off the site of Rotorua Airport.
- The exercise was supported by injects.

# Emergency Services Participants:

- 6 - St John Ambulance
- 6 - Police
- 6 - Fire
- 4 - Civil Defence
- 3 - Airport





# Hospital Participants:

**8 - Clinicians**

**11 - Nurses**

*(ED, Theatre, ICU)*

**2 - Administration**

*(ED)*

**3 - Management**

*(Incident Controller,  
Planning & Intelligence  
and Duty Manager)*

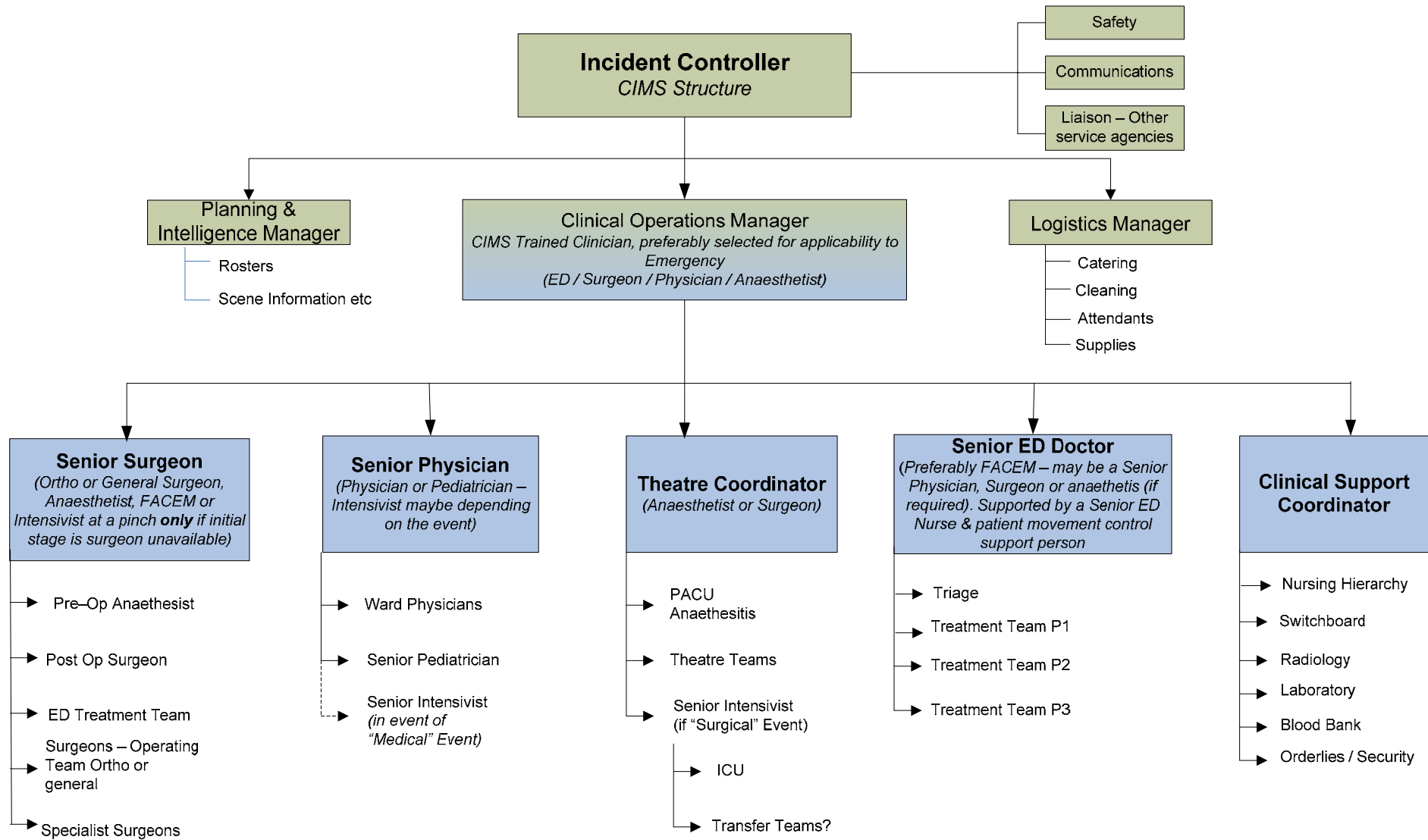
**2 - Orderlies**



# Things that worked for us

- Getting a Doctor involved in the planning...he encouraged his colleagues to join in.
- Taking an ED staff member to an Emergo exercise before ours...she made sure ED staff turned up at our exercise.
- Doing the snap shot by visiting the departments a week before the exercise.
- Referring to EMERGO regularly in training and presentations well before the exercise day.
- Establishing a multi agency planning group.
- Booking a big venue with two large rooms and catering facilities attached.
- Having good support from other Emergency Management staff.

# Clinical Major Trauma Structure





# Things to improve on

---

- We did not have a full CIMS team in the Hospital EOC.
- Try and take measures to reduce noise levels (Some suggested separate rooms would be more realistic.)
- The patient tracking system was not the one used normally in the hospital.

# The advantages of Emergo

- The system avoids risk to real patients.
- Staff can be removed from normal workplace and commitments for the duration of the training. (*No distractions*)
- It provides an opportunity to trial new management systems and processes without risk.
- Staff find the training enjoyable and non threatening.
- Evaluations can be undertaken on clinical decisions and feedback provided. i.e. triage decisions.
- All aspects of scene/ hospital management can be exercised.
- Provides an opportunity for emergency services to see how Health works and visa versa.
- Low cost.

# Thanks

*Thanks to Lucy and the Midland Team for making this an enjoyable and successful day.*

