

**.....Exercise Turbulence .....**

**14<sup>th</sup> November 2009**

**Welcome**

Otago District Health Board

Dunedin Hospital

# Introduction

- Interagency coordination & cooperation
- Inter-hospital networking
- Emergency Department response to mass casualties
- CIMS (Coordinated Incident Management System)
- Opportunities for learning

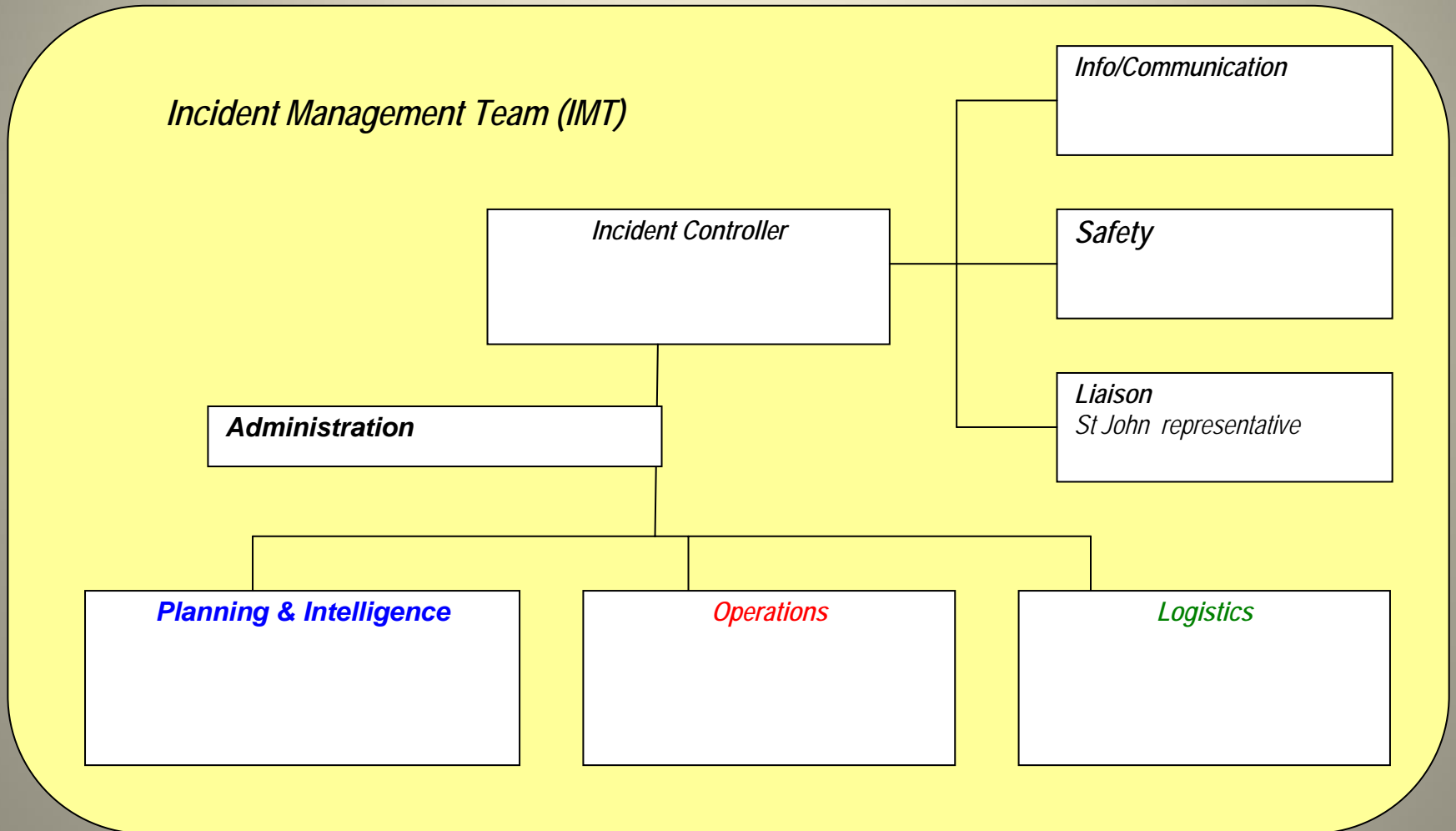
# Participants

- Emergo Senior Instructors
- Umpires:
  - ED Consultant
  - EOC Graeme McColl (Senior Instructor)
- ED Controller

# Inter-hospital Support

- Radiology
  - X-Ray
  - CT
- Theatre
- ICU
- Wards including Paediatrics
- Orderlies
- Security

# Incident Management Team



# .....Emergo.....

- Lucy Adams  
Emergency Planning Advisor for St John
- “Emergo” Training Senior Instructor

# ATR 72 Dunedin Airport



# Notification

- ATR 72 due to land
- Alert re engine trouble
- Duty Coordinator notified through normal process
- Further update will follow



# .....Crash Site at Airport.....



# Second Alert

- Duty Coordinator receives further information
  - Aircraft crash
  - Casualty numbers unknown
  - Activates Emergency Response Plan

# Exercise Begins.....

- Participants to the designated areas
- Emergo Train Instructors gave a briefing on whiteboards and rules of play
- Exercise began with the next Duty Coordinator update

# Emergency Operations Centre

- Set up
- Staff call back
- Decant wards ready for influx
- Advisory for staff
- Media releases
- Forward planning

# Emergency Department

- Replicated on whiteboards
- Activate Emergency Response Plan
- Decant existing patients
- Expand into predetermined
- Areas
- 56 casualties
- 14 business as usual patients



# Outcome

- All 56 patients entered onto electronic ED tracking system
- 40 patients in ED at completion of exercise
- No significant patient adverse outcomes
- Wards still had capacity to accept patients

# Recommendations

- Consider a second triage area to support influx
- Stager the staff call back to cope with flow on effect over the next days
- Have updates on patient conditions/ response to interventions
- Update Emergo evaluation form to gather more information from participants

# Recommendations

- Review Emergency Department Response Plan
- Review ED emergency cupboard / equipment
- Education for ED staff re new Emergency Response Plan